

Setting up Dynamicweb for Load Balancing with Microsoft ARR for IIS8

LEGAL INFORMATION

© Copyright 2015 Dynamicweb Software A/S.

All rights reserved. Alteration or reproduction of this document or parts hereof is strictly prohibited, regardless of form or means, unless explicit permission has been acquired from Dynamicweb Software.

Dynamicweb is a registered trademark of Dynamicweb Software.
Company and product names mentioned in this document may be registered trademarks or trademarks of third parties.

CONTENTS

Introduction	v
What this document is about	v
Who this document is for	v
1 Setup	6
1.1 DNS	6
1.2 DW Server 1	6
1.3 DW Server 2	6
1.4 ARR Server	7
1.5 Setup in Dynamicweb Backend	10

INTRODUCTION

What this document is about

This document details how to set up Dynamicweb 8 for Load Balancing using Microsoft ARR.

For this example we will be setting up Dynamicweb in a 2 server load balanced setup with a third server distributing traffic using Microsoft ARR for IIS8

Who this document is for

Technical personnel responsible for hosting

1 SETUP

1.1 DNS

Create the following host headers (names are just examples)

- Node1.mysite.com pointing to DW Server 1
- Node2.mysite.com pointing to DW Server 2
- Mysite.com pointing to ARR Server

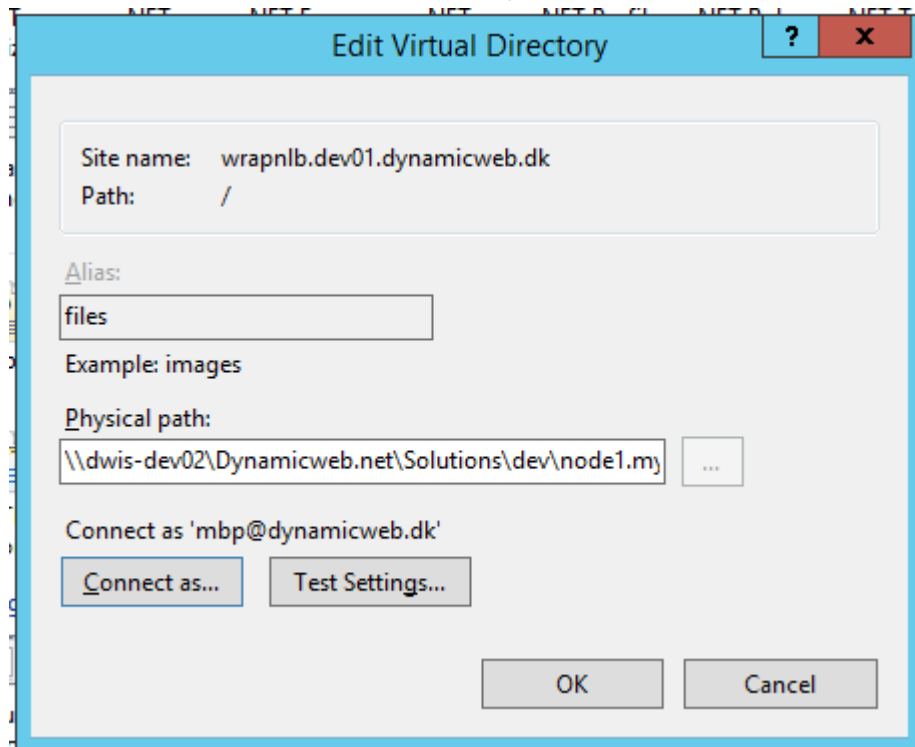
1.2 DW Server 1

Set up Dynamicweb with a local application folder and a /Files vdir pointing to a local Files folder. Point globalsettings.aspx to an SQL database running on the local server

Attach the Node1.mysite.com and Mysite.com host headers

1.3 DW Server 2

Set up Dynamicweb with a local application folder but point the /Files vdir to the DW Server 1 Files folder using a UNC path. In the Edit Virtual Directory click Connect as and select a domain user with Full Control permissions on DW Server 1



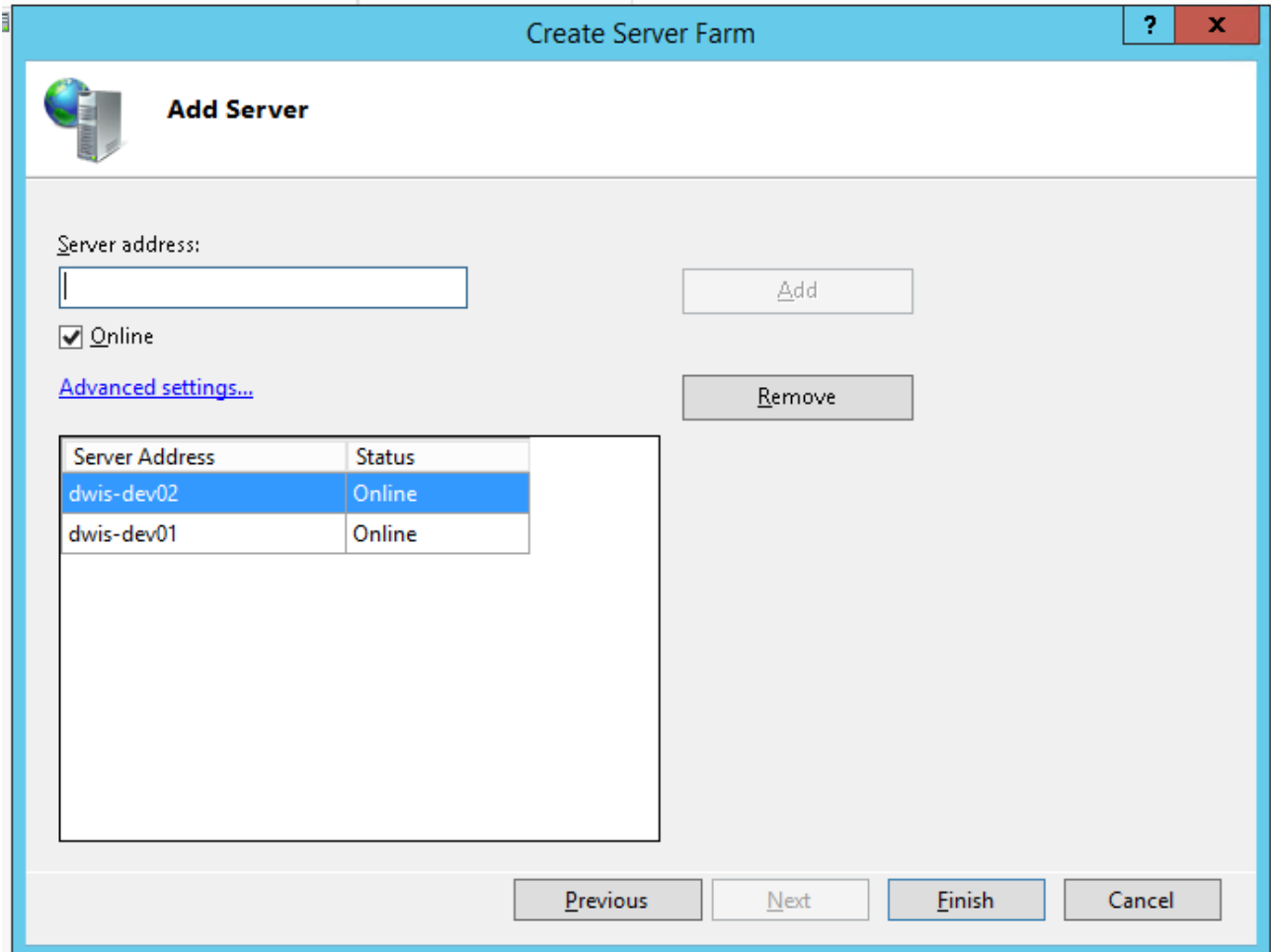
Attach the Node2.mysite.com and Mysite.com hostheaders

1.4 ARR Server

Install the IIS8 ARR extension by going to

http://www.microsoft.com/web/gallery/install.aspx?appid=ARRv3_0

Create a Server Farm under the Server Farms node and add DW Server 1 and 2 as member servers



In the Load Balance window select distribution algorithm. The algorithms “Least current request” and “Least response time” can be used for Dynamicweb usage, but “Weighted round robin” is the recommended method as it allows you to adjust the relative weight of server thus accounting for differences in load or hardware

In our example setup shown below we use a 55/45 distribution as the 45 server is also used as SQL Server

Load Balance

Use this feature to configure which load balance algorithm Application Request Routing should use.

Load Balance

Load balance algorithm:
Weighted round robin

Load distribution:
Custom distribution

Server Address	% Distribution	Relative Weight
dwis-dev01	45.00 %	45
dwis-dev02	55.00 %	55

In the Server Affinity window it is important to select Client Affinity. Host Name Affinity will not work with Dynamicweb

Server Affinity

Use this feature to configure how Application Request Routing should affinity requests to the content servers.

Client Affinity

Client affinity

Ignore subdomains

Cookie name:

Host Name Affinity

Use host name

Host name affinity provider:

Ignore subdomains

To complete setup add the mysite.com host header to the ARR Servers default website

1.5 Setup in Dynamicweb Backend

Locate the Load Balancing node in the Management Center and fill in the primary server. When everything is ready set the node to Enabled

Load balancing

Web clustering

This is a non-primary webserver Enabled

Primary machinename

Local machine name DWIS-DEV02

Local host name mbphead.dev02.dynamicweb.dk

Instances

Machine name	Instance name	IP address	Startup time	Cache update	Active
DWIS-DEV02	mbphead.dev02.dynamicweb.dk	10.3.4.17	Tue, 24 Mar 2015 10:14	Tue, 24 Mar 2015 10:37	✗
NB-DMIB	head.local.dynamicweb.dk	127.0.0.1	Thu, 19 Mar 2015 09:40	Thu, 19 Mar 2015 10:31	✗

For the primary node no action is needed as a node is considered primary if no other primary server is defined (please note that a primary node cannot be disabled)

Load balancing

Web clustering

This is the primary web server

Primary machinename

Local machine name DWIS-DEV02

Local host name mbphead.dev02.dynamicweb.dk

Instances

Machine name	Instance name	IP address	Startup time	Cache update	Active
DWIS-DEV02	mbphead.dev02.dynamicweb.dk	10.3.4.17	Tue, 24 Mar 2015 10:14	Tue, 24 Mar 2015 10:38	✓
NB-DMIB	head.local.dynamicweb.dk	127.0.0.1	Thu, 19 Mar 2015 09:40	Thu, 19 Mar 2015 10:31	✗